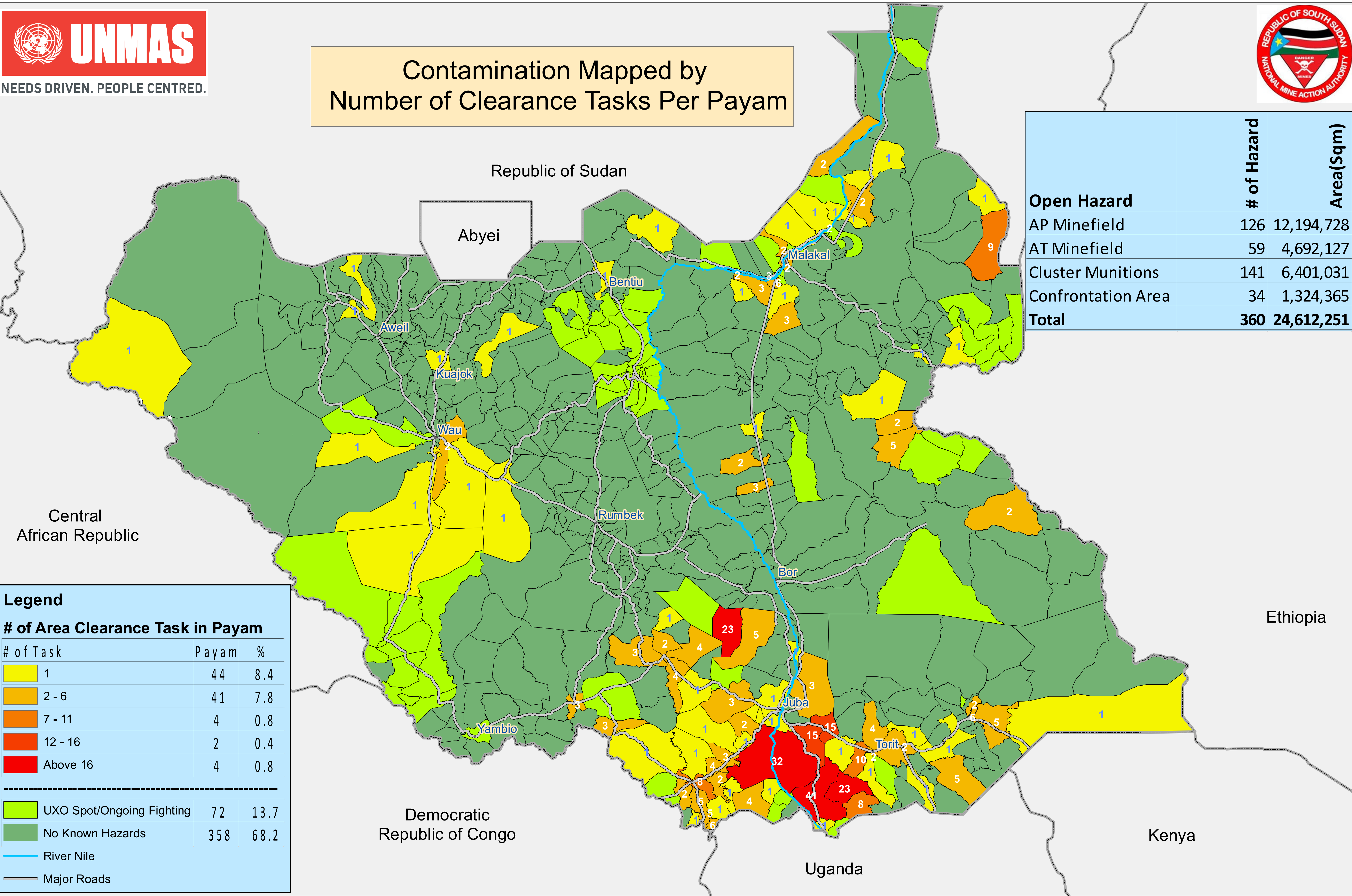


Open Hazardous Areas in South Sudan as of 31 December 2019



Contamination Mapped by Number of Clearance Tasks Per Payam



Open Hazard	# of Hazard	Area(Sqm)
AP Minefield	126	12,194,728
AT Minefield	59	4,692,127
Cluster Munitions	141	6,401,031
Confrontation Area	34	1,324,365
Total	360	24,612,251

Legend		
# of Area Clearance Task in Payam		
# of Task	Payam	%
1	44	8.4
2 - 6	41	7.8
7 - 11	4	0.8
12 - 16	2	0.4
Above 16	4	0.8

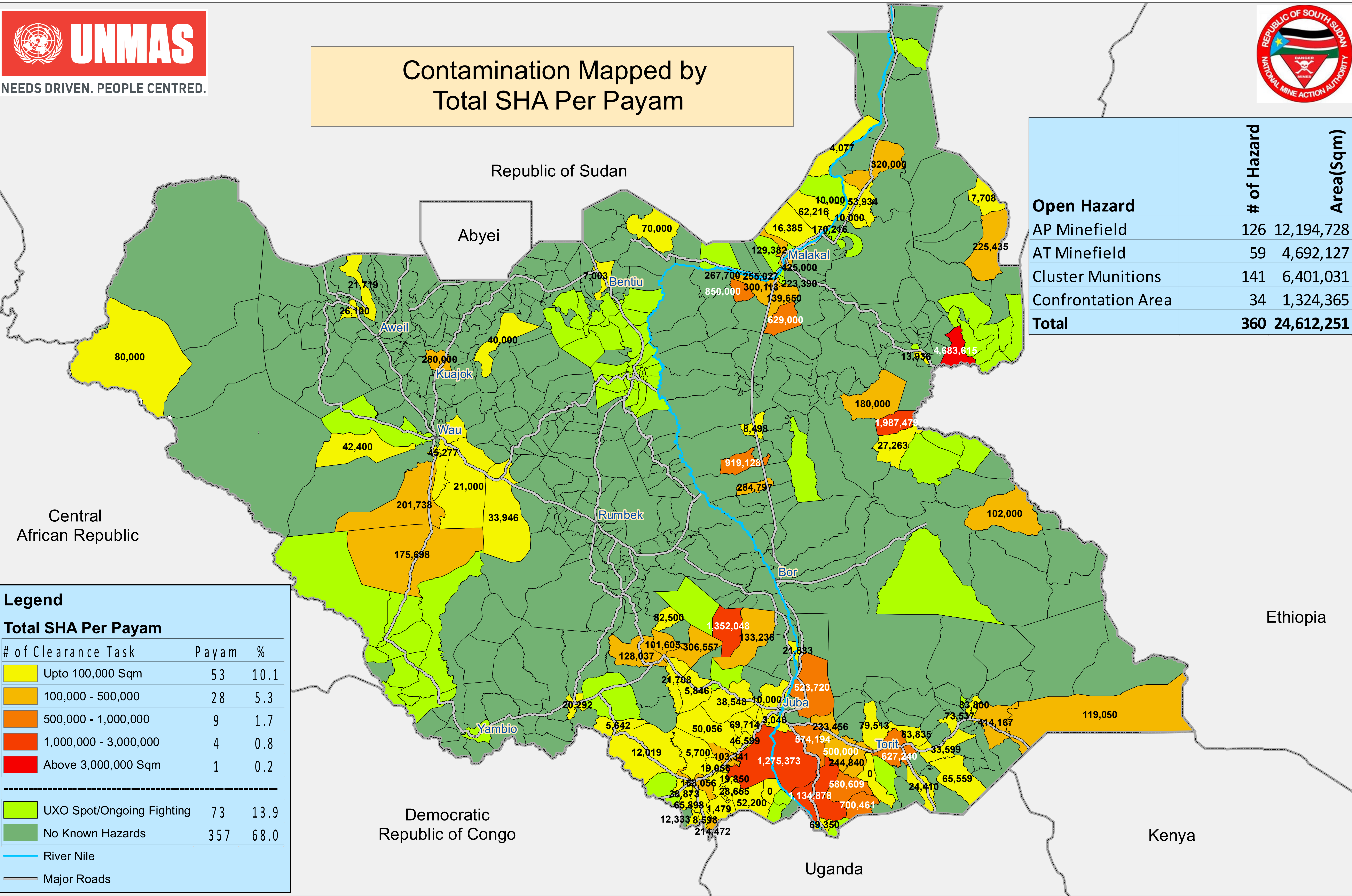
UXO Spot/Ongoing Fighting	72	13.7
No Known Hazards	358	68.2

River Nile		
Major Roads		

Open Hazardous Areas in South Sudan as of 31 December 2019



Contamination Mapped by Total SHA Per Payam



Open Hazard	# of Hazard	Area(Sqm)
AP Minefield	126	12,194,728
AT Minefield	59	4,692,127
Cluster Munitions	141	6,401,031
Confrontation Area	34	1,324,365
Total	360	24,612,251

Legend		
Total SHA Per Payam		
# of Clearance Task	Payam	%
Upto 100,000 Sqm	53	10.1
100,000 - 500,000	28	5.3
500,000 - 1,000,000	9	1.7
1,000,000 - 3,000,000	4	0.8
Above 3,000,000 Sqm	1	0.2
<hr/>		
UXO Spot/Ongoing Fighting	73	13.9
No Known Hazards	357	68.0
River Nile		
Major Roads		