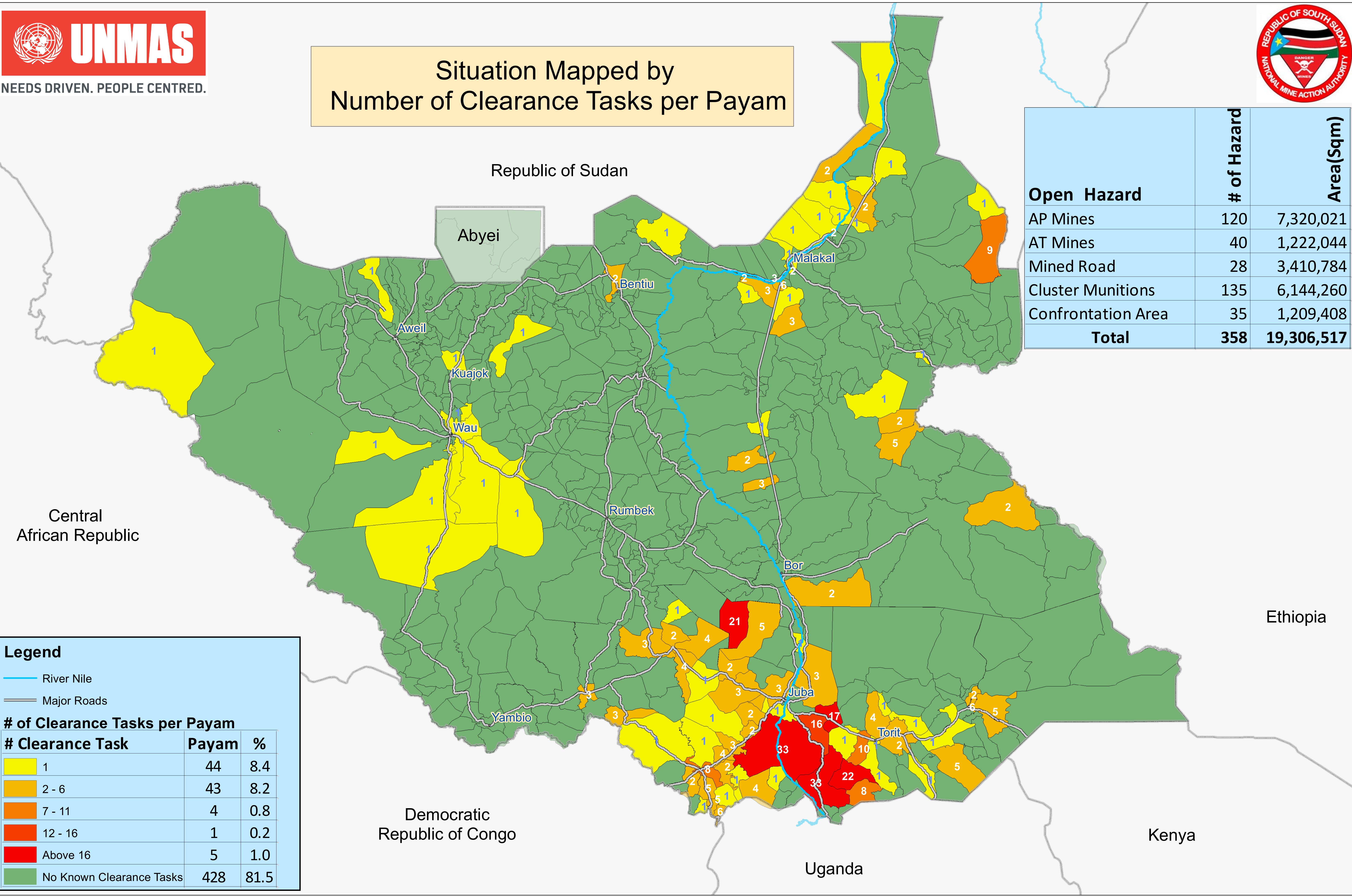


Remaining Hazardous Areas in South Sudan as of 31 October 2020



Situation Mapped by Number of Clearance Tasks per Payam



Open Hazard	# of Hazard	Area(Sqm)
AP Mines	120	7,320,021
AT Mines	40	1,222,044
Mined Road	28	3,410,784
Cluster Munitions	135	6,144,260
Confrontation Area	35	1,209,408
Total	358	19,306,517

Legend

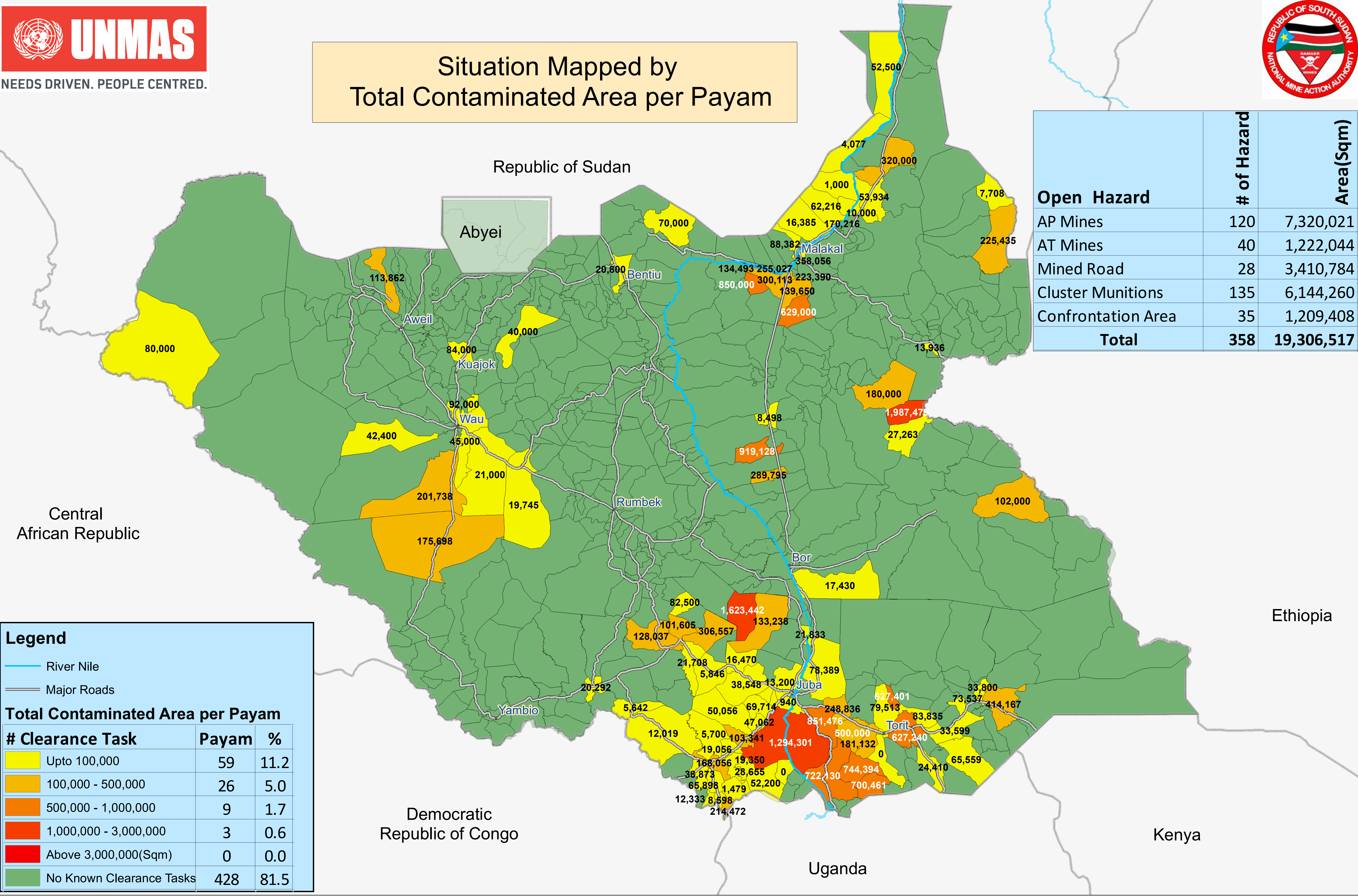
- River Nile
- Major Roads

# of Clearance Tasks per Payam		
# Clearance Task	Payam	%
1	44	8.4
2 - 6	43	8.2
7 - 11	4	0.8
12 - 16	1	0.2
Above 16	5	1.0
No Known Clearance Tasks	428	81.5

Remaining Hazardous Areas in South Sudan as of 31 October 2020



Situation Mapped by Total Contaminated Area per Payam



Open Hazard	# of Hazard	Area(Sqm)
AP Mines	120	7,320,021
AT Mines	40	1,222,044
Mined Road	28	3,410,784
Cluster Munitions	135	6,144,260
Confrontation Area	35	1,209,408
Total	358	19,306,517

Legend

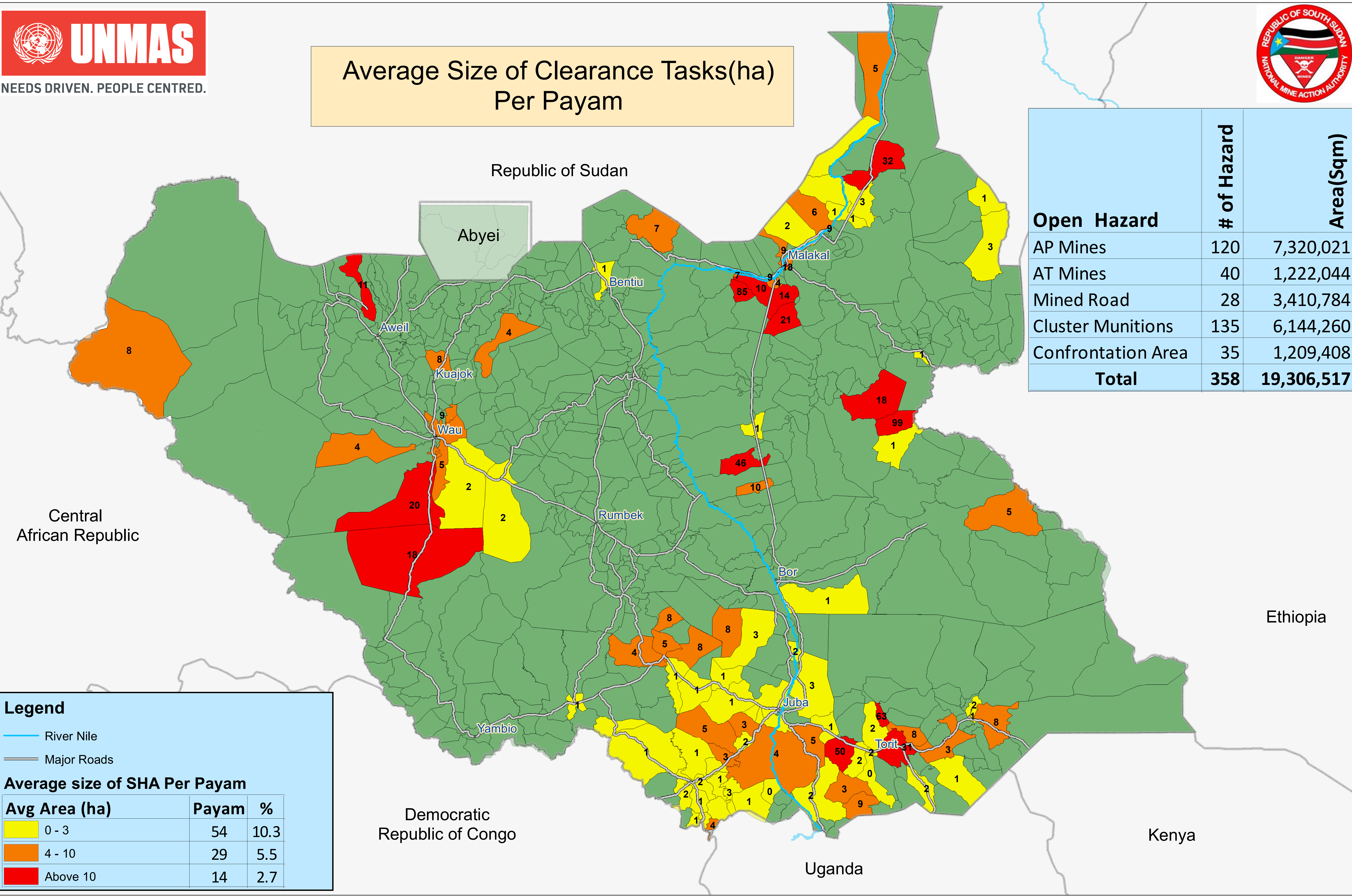
- River Nile
- Major Roads

Total Contaminated Area per Payam		
# Clearance Task	Payam	%
Upto 100,000	59	11.2
100,000 - 500,000	26	5.0
500,000 - 1,000,000	9	1.7
1,000,000 - 3,000,000	3	0.6
Above 3,000,000(Sqm)	0	0.0
No Known Clearance Tasks	428	81.5

Remaining Hazardous Areas in South Sudan as of 31 October 2020



Average Size of Clearance Tasks(ha) Per Payam



Open Hazard	# of Hazard	Area(Sqm)
AP Mines	120	7,320,021
AT Mines	40	1,222,044
Mined Road	28	3,410,784
Cluster Munitions	135	6,144,260
Confrontation Area	35	1,209,408
Total	358	19,306,517

Legend

- River Nile
- Major Roads

Average size of SHA Per Payam

Avg Area (ha)	Payam	%
0 - 3	54	10.3
4 - 10	29	5.5
Above 10	14	2.7