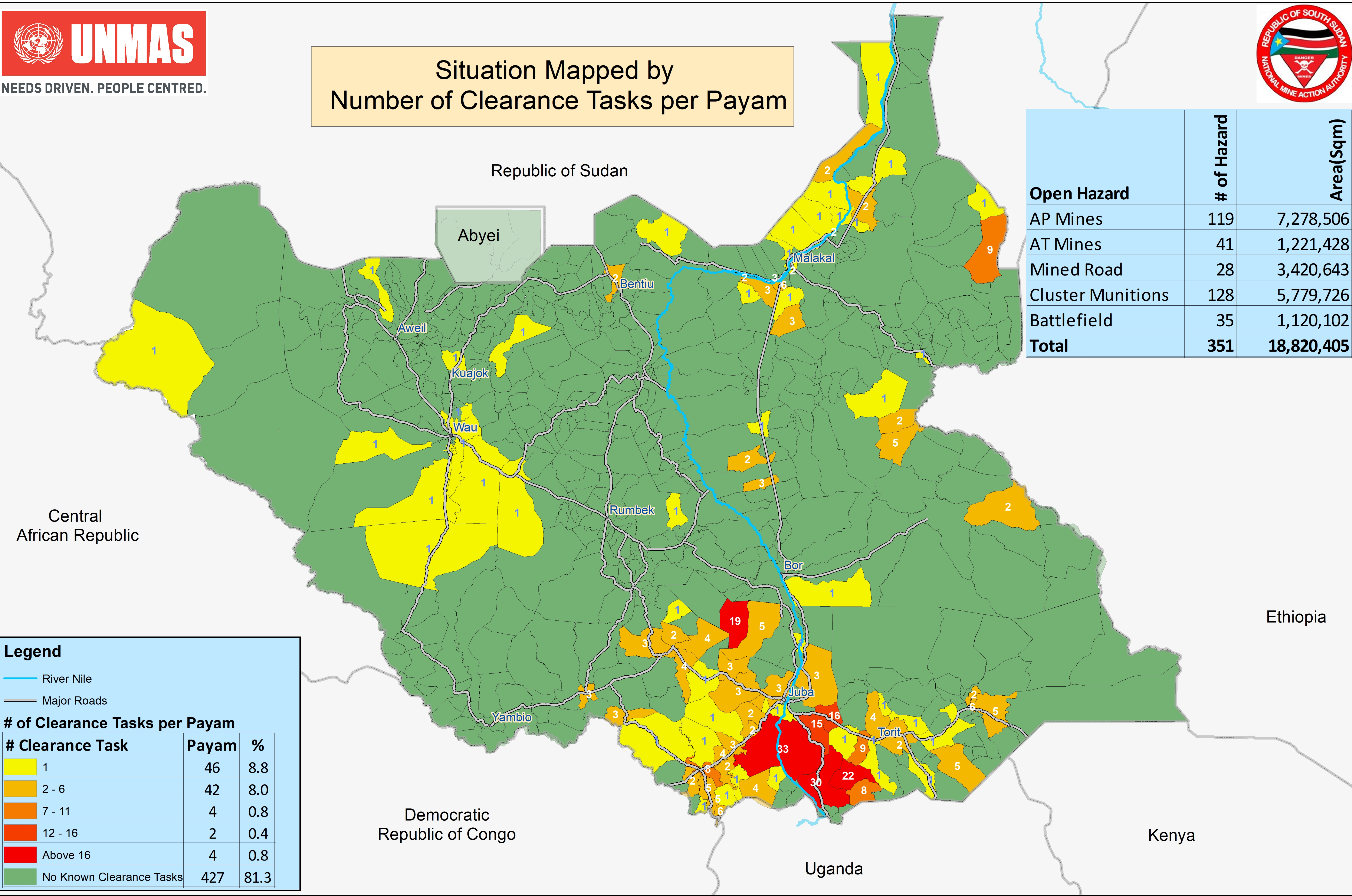


Remaining Hazardous Areas in South Sudan as of 31 December 2020



Situation Mapped by
Number of Clearance Tasks per Payam



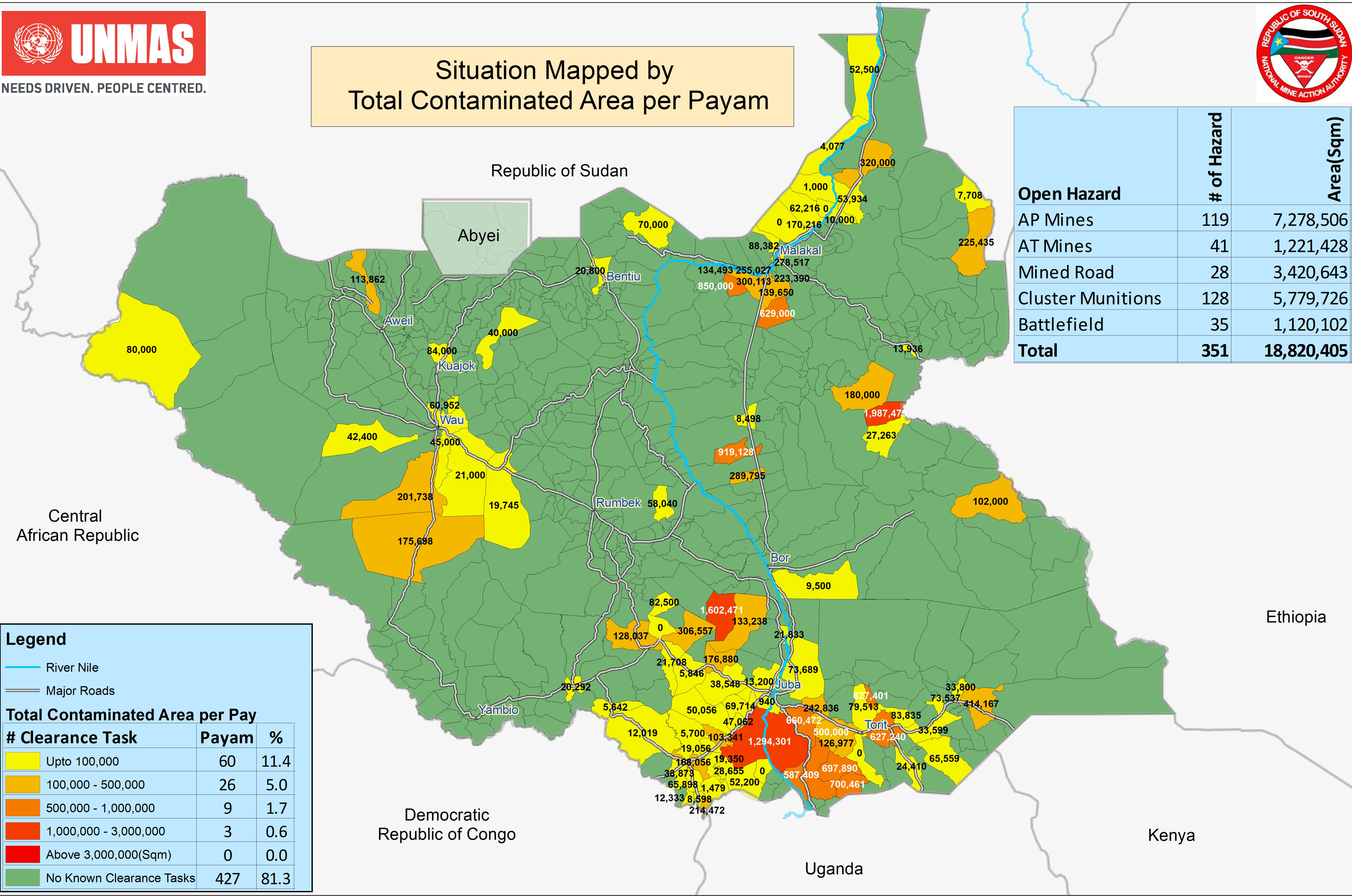
Open Hazard	# of Hazard	Area(Sqm)
AP Mines	119	7,278,506
AT Mines	41	1,221,428
Mined Road	28	3,420,643
Cluster Munitions	128	5,779,726
Battlefield	35	1,120,102
Total	351	18,820,405

Legend		
— River Nile		
— Major Roads		
# of Clearance Tasks per Payam		
# Clearance Task	Payam	%
1	46	8.8
2 - 6	42	8.0
7 - 11	4	0.8
12 - 16	2	0.4
Above 16	4	0.8
No Known Clearance Tasks	427	81.3

Remaining Hazardous Areas in South Sudan as of 31 December 2020



Situation Mapped by
Total Contaminated Area per Payam



Open Hazard	# of Hazard	Area(Sqm)
AP Mines	119	7,278,506
AT Mines	41	1,221,428
Mined Road	28	3,420,643
Cluster Munitions	128	5,779,726
Battlefield	35	1,120,102
Total	351	18,820,405

Legend		
River Nile		
Major Roads		
Total Contaminated Area per Pay		
# Clearance Task	Payam	%
Upto 100,000	60	11.4
100,000 - 500,000	26	5.0
500,000 - 1,000,000	9	1.7
1,000,000 - 3,000,000	3	0.6
Above 3,000,000(Sqm)	0	0.0
No Known Clearance Tasks	427	81.3