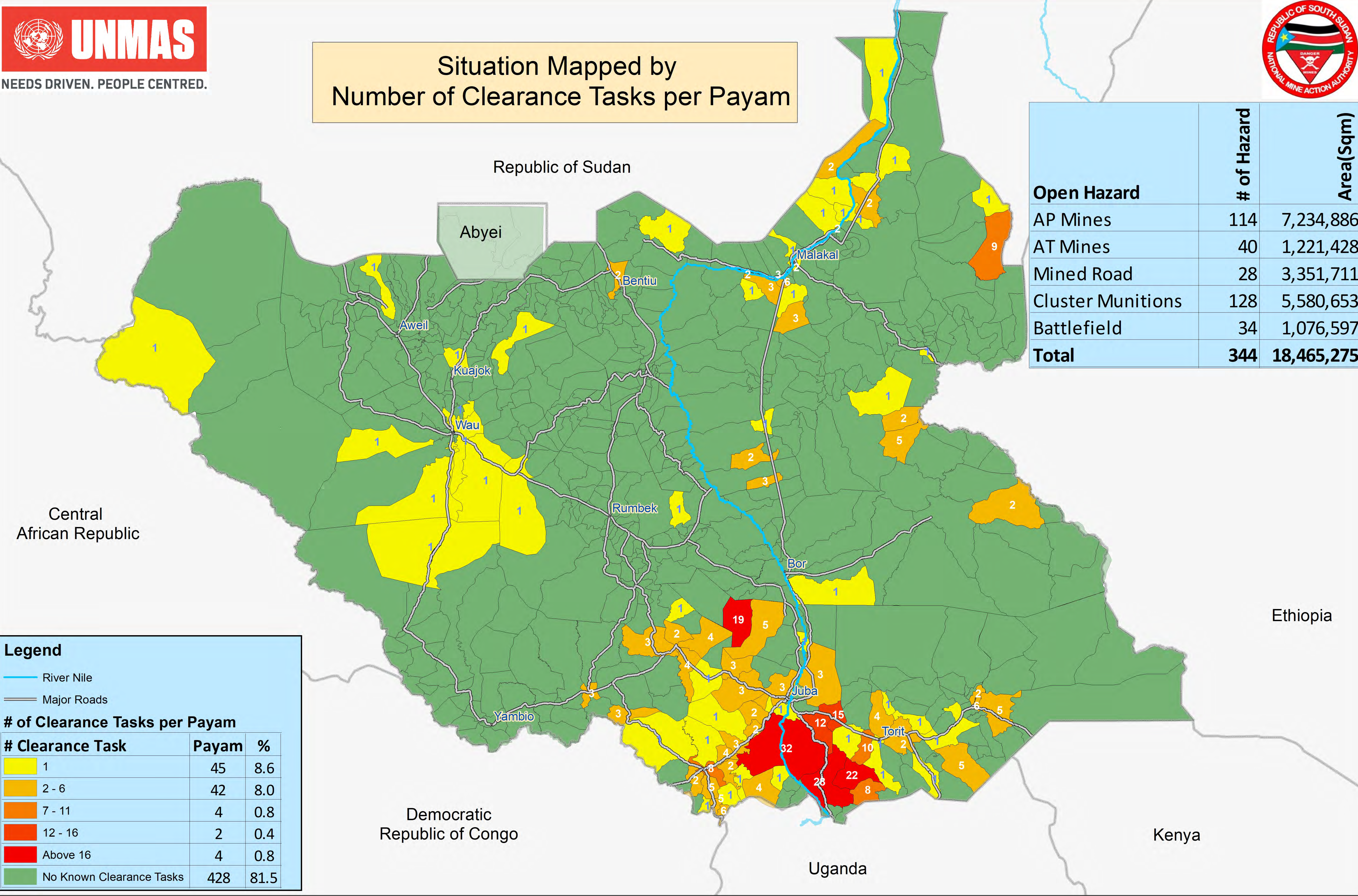


Remaining Hazardous Areas in South Sudan as of 31 January 2021



Situation Mapped by
Number of Clearance Tasks per Payam



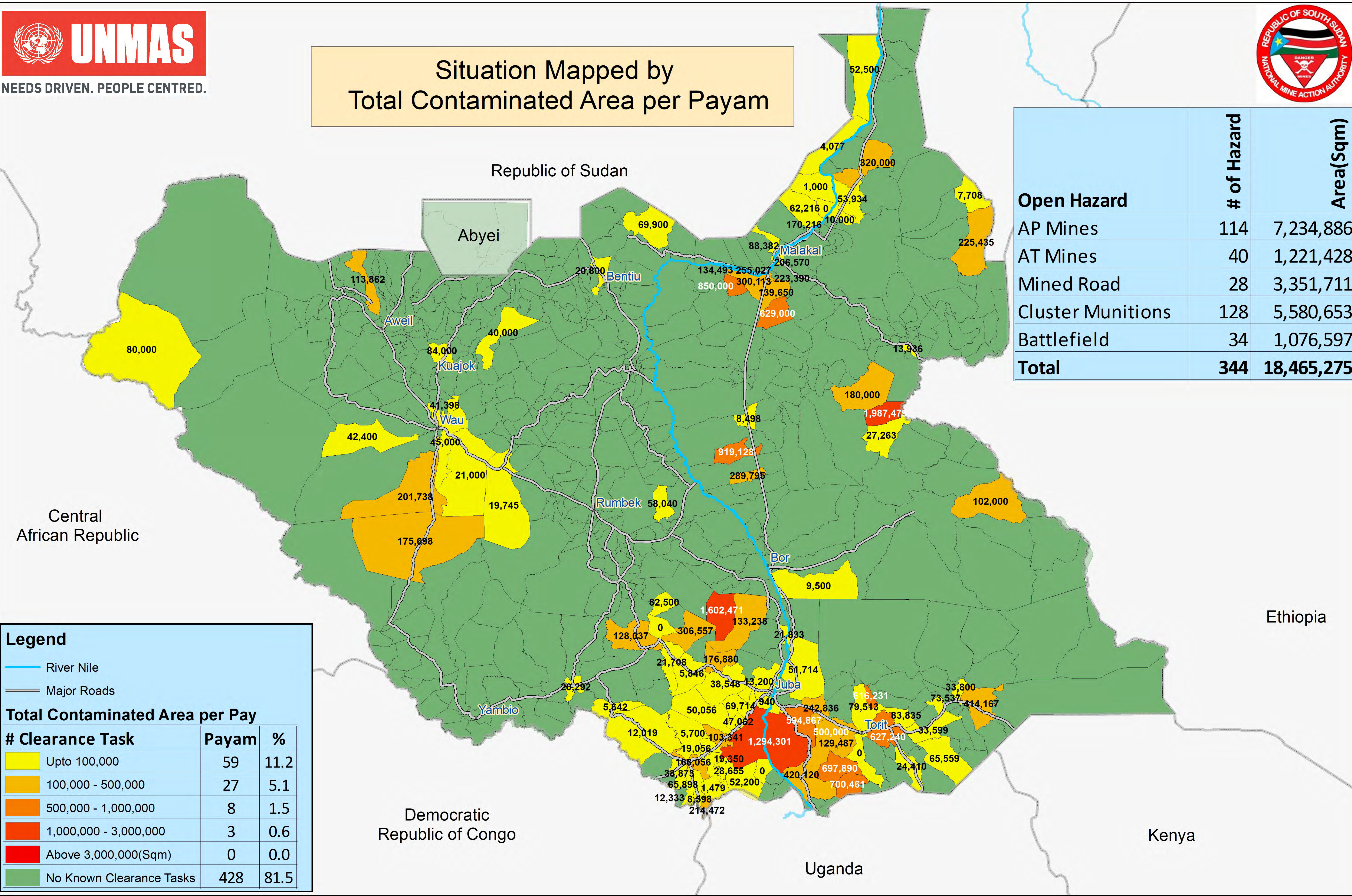
| Open Hazard | # of Hazard | Area(Sqm) |
|-------------------|-------------|-------------------|
| AP Mines | 114 | 7,234,886 |
| AT Mines | 40 | 1,221,428 |
| Mined Road | 28 | 3,351,711 |
| Cluster Munitions | 128 | 5,580,653 |
| Battlefield | 34 | 1,076,597 |
| Total | 344 | 18,465,275 |

| Legend | | |
|--------------------------------|-------|------|
| — River Nile | | |
| — Major Roads | | |
| # of Clearance Tasks per Payam | | |
| # Clearance Task | Payam | % |
| 1 | 45 | 8.6 |
| 2 - 6 | 42 | 8.0 |
| 7 - 11 | 4 | 0.8 |
| 12 - 16 | 2 | 0.4 |
| Above 16 | 4 | 0.8 |
| No Known Clearance Tasks | 428 | 81.5 |

Remaining Hazardous Areas in South Sudan as of 31 January 2021



Situation Mapped by
Total Contaminated Area per Payam



| Open Hazard | # of Hazard | Area(Sqm) |
|-------------------|-------------|------------|
| AP Mines | 114 | 7,234,886 |
| AT Mines | 40 | 1,221,428 |
| Mined Road | 28 | 3,351,711 |
| Cluster Munitions | 128 | 5,580,653 |
| Battlefield | 34 | 1,076,597 |
| Total | 344 | 18,465,275 |

| Legend | | |
|---------------------------------|-------|------|
| River Nile | | |
| Major Roads | | |
| Total Contaminated Area per Pay | | |
| # Clearance Task | Payam | % |
| Upto 100,000 | 59 | 11.2 |
| 100,000 - 500,000 | 27 | 5.1 |
| 500,000 - 1,000,000 | 8 | 1.5 |
| 1,000,000 - 3,000,000 | 3 | 0.6 |
| Above 3,000,000(Sqm) | 0 | 0.0 |
| No Known Clearance Tasks | 428 | 81.5 |