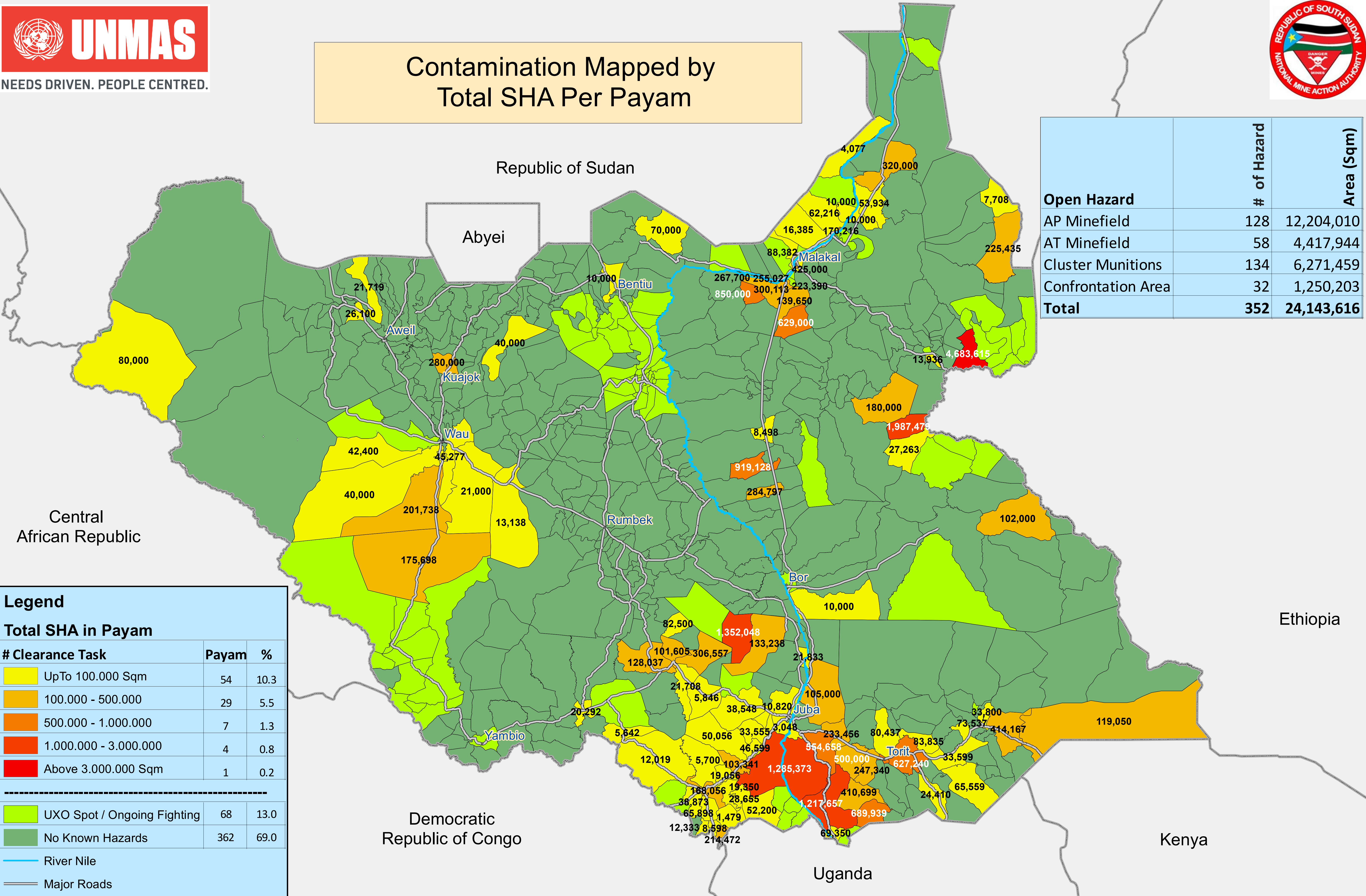


Open Hazardous Areas in South Sudan as of 30 September 2019



Contamination Mapped by Total SHA Per Payam



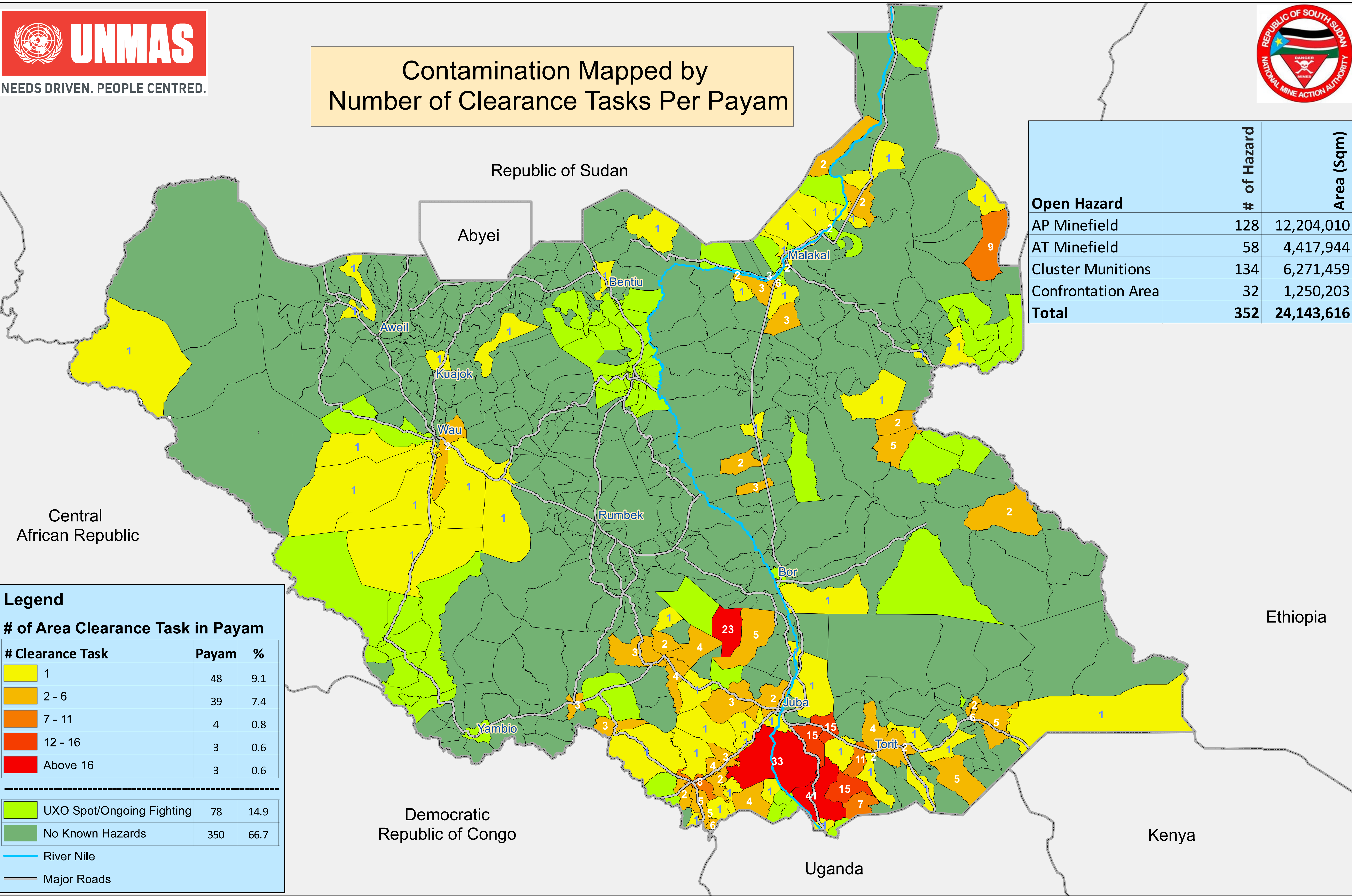
Open Hazard	# of Hazard	Area (Sqm)
AP Minefield	128	12,204,010
AT Minefield	58	4,417,944
Cluster Munitions	134	6,271,459
Confrontation Area	32	1,250,203
Total	352	24,143,616

Legend		
Total SHA in Payam		
# Clearance Task	Payam	%
UpTo 100.000 Sqm	54	10.3
100.000 - 500.000	29	5.5
500.000 - 1.000.000	7	1.3
1.000.000 - 3.000.000	4	0.8
Above 3.000.000 Sqm	1	0.2
<hr/>		
UXO Spot / Ongoing Fighting	68	13.0
No Known Hazards	362	69.0
River Nile Major Roads		

Open Hazardous Areas in South Sudan as of 30 September 2019



Contamination Mapped by Number of Clearance Tasks Per Payam



Open Hazard	# of Hazard	Area (Sqm)
AP Minefield	128	12,204,010
AT Minefield	58	4,417,944
Cluster Munitions	134	6,271,459
Confrontation Area	32	1,250,203
Total	352	24,143,616

Legend

of Area Clearance Task in Payam

# Clearance Task	Payam	%
1	48	9.1
2 - 6	39	7.4
7 - 11	4	0.8
12 - 16	3	0.6
Above 16	3	0.6

UXO Spot/Ongoing Fighting	78	14.9
No Known Hazards	350	66.7

— River Nile
— Major Roads