

Remaining Hazardous Areas in South Sudan as of 30 November 2024



Situation Mapped by Number of Clearance Tasks per Payam

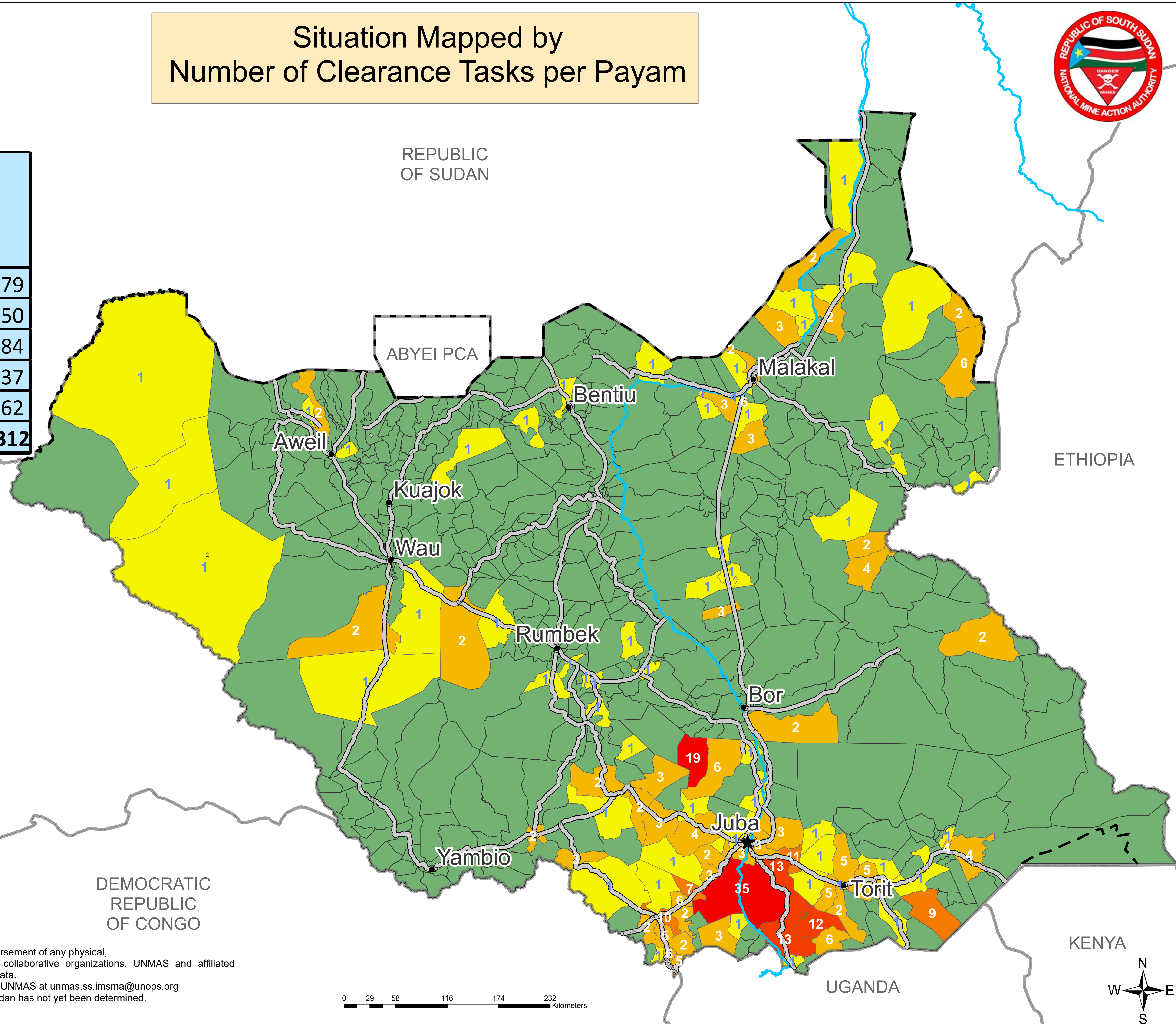


Open Hazard	# of Hazard	Area(Sqm)
AP Mines	116	5,037,879
AT Mines	51	2,318,050
Mined Road	26	3,916,484
Cluster Munitions	104	9,384,737
Battlefield	37	1,529,162
Total	334	22,186,312

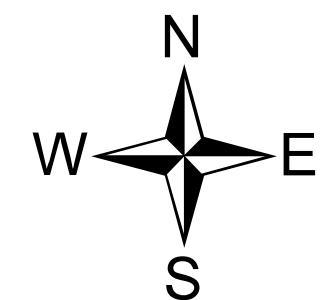
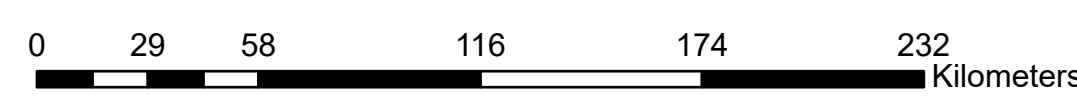
LEGEND

- ★ Country Capital
- State Capital
- River Nile
- Major Roads
- - Undetermined Boundary
- ▭ International Boundaries South Sudan

# of Clearance Task	Payam	%
1	56	11.0
2 - 6	45	8.8
7 - 11	3	0.6
12 - 16	3	0.6
Above 16	2	0.4
No Known Hazards	416	79.2



The information shown on this map does not imply official recognition or endorsement of any physical, political boundaries or featured names by the United Nations or other collaborative organizations. UNMAS and affiliated organizations are not liable for damage of any kind related to the use of this data. Users who notice errors or omissions are encouraged to inform the IM unit of UNMAS at unmas.ss.imsma@unops.org. Final boundary between the Republic of Sudan and the Republic of South Sudan has not yet been determined. Final status of the Abyei area is not yet determined.



Remaining Hazardous Areas in South Sudan as of 30 November 2024



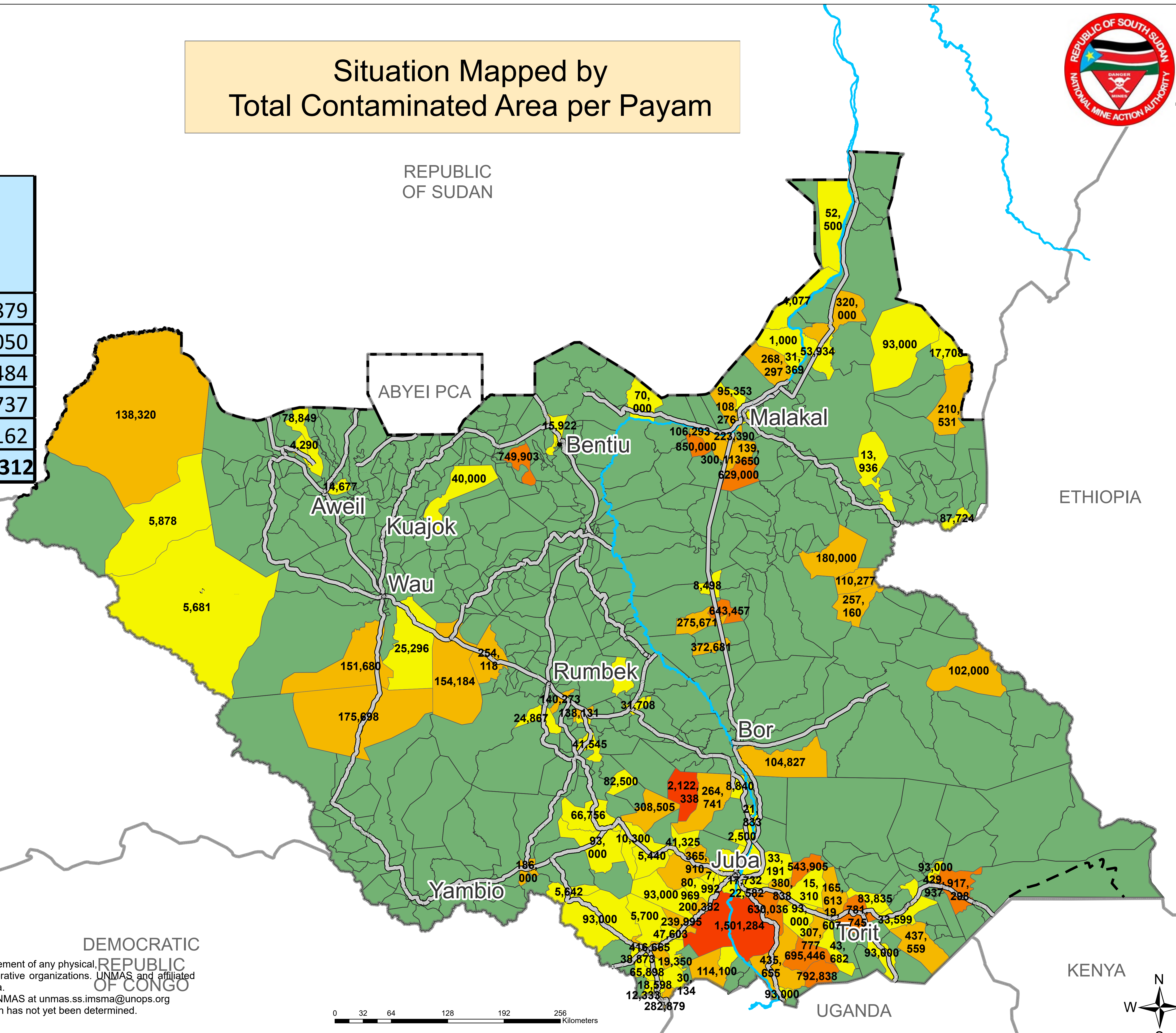
Situation Mapped by
Total Contaminated Area per Payam

Open Hazard	# of Hazard	Area(Sqm)
AP Mines	116	5,037,879
AT Mines	51	2,318,050
Mined Road	26	3,916,484
Cluster Munitions	104	9,384,737
Battlefield	37	1,529,162
Total	334	22,186,312

LEGEND

- ★ Country Capital
- State Capital
- River Nile
- Major Roads
- - - Undetermined Boundary
- International Boundaries South Sudan

Total Contaminated Area	Payam	%
Above 3,000,000 Sqm	0	0.0
1,000,000 - 3,000,000	2	0.4
500,000 - 1,000,000	10	1.9
100,000 - 500,000	38	7.2
Up to 100,000 Sqm	60	11.4
No Known Hazards	415	79.0



The information shown on this map does not imply official recognition or endorsement of any physical, political boundaries or featured names by the United Nations or other collaborative organizations. UNMAS and affiliated organizations are not liable for damage of any kind related to the use of this data. Users who notice errors or omissions are encouraged to inform the IM unit of UNMAS at unmas.ss.imsma@unops.org. Final boundary between the Republic of Sudan and the Republic of South Sudan has not yet been determined. Final status of the Abyei area is not yet determined.

