

# Remaining Hazardous Areas in South Sudan as of 31 December 2024



Situation Mapped by  
Number of Clearance Tasks per Payam

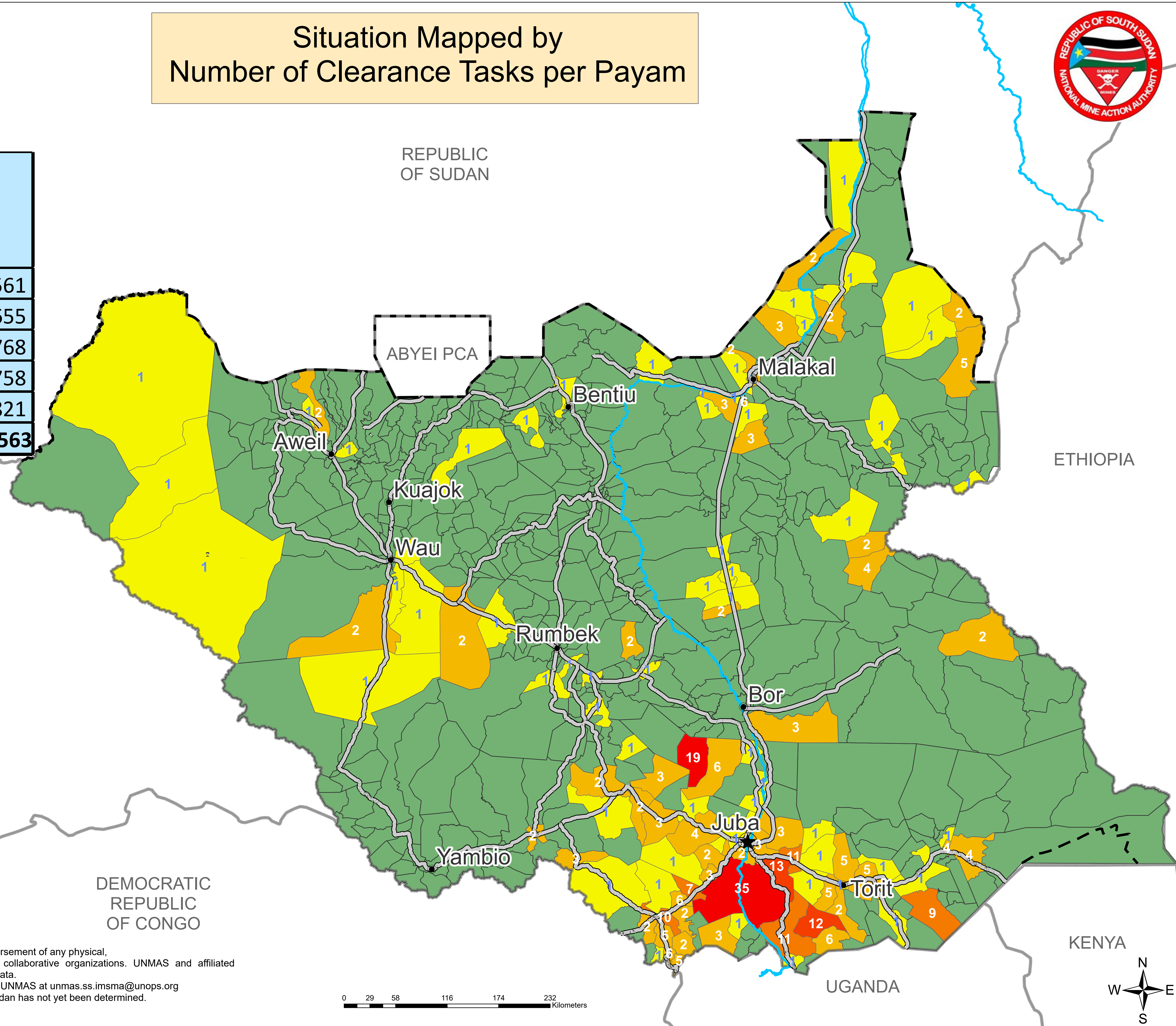


Open Hazard	# of Hazard	Area(Sqm)
AP Mines	114	4,943,561
AT Mines	51	2,329,655
Mined Road	26	3,919,768
Cluster Munitions	105	9,531,758
Battlefield	37	1,614,821
<b>Total</b>	<b>333</b>	<b>22,339,563</b>

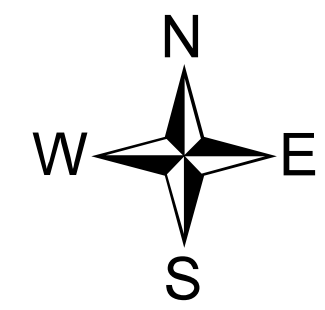
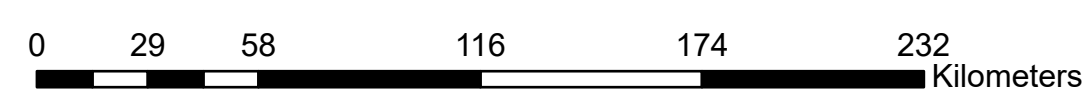
**LEGEND**

- ★ Country Capital
- State Capital
- River Nile
- Major Roads
- - Undetermined Boundary
- ▭ International Boundaries South Sudan

# of Clearance Task	Payam	%
1	57	11.2
2 - 6	46	9.0
7 - 11	5	1.0
12 - 16	2	0.4
Above 16	2	0.4
No Known Hazards	413	78.7



The information shown on this map does not imply official recognition or endorsement of any physical, political boundaries or featured names by the United Nations or other collaborative organizations. UNMAS and affiliated organizations are not liable for damage of any kind related to the use of this data. Users who notice errors or omissions are encouraged to inform the IM unit of UNMAS at [unmas.ss.imsma@unops.org](mailto:unmas.ss.imsma@unops.org). Final boundary between the Republic of Sudan and the Republic of South Sudan has not yet been determined. Final status of the Abyei area is not yet determined.





# Remaining Hazardous Areas in South Sudan as of 31 December 2024



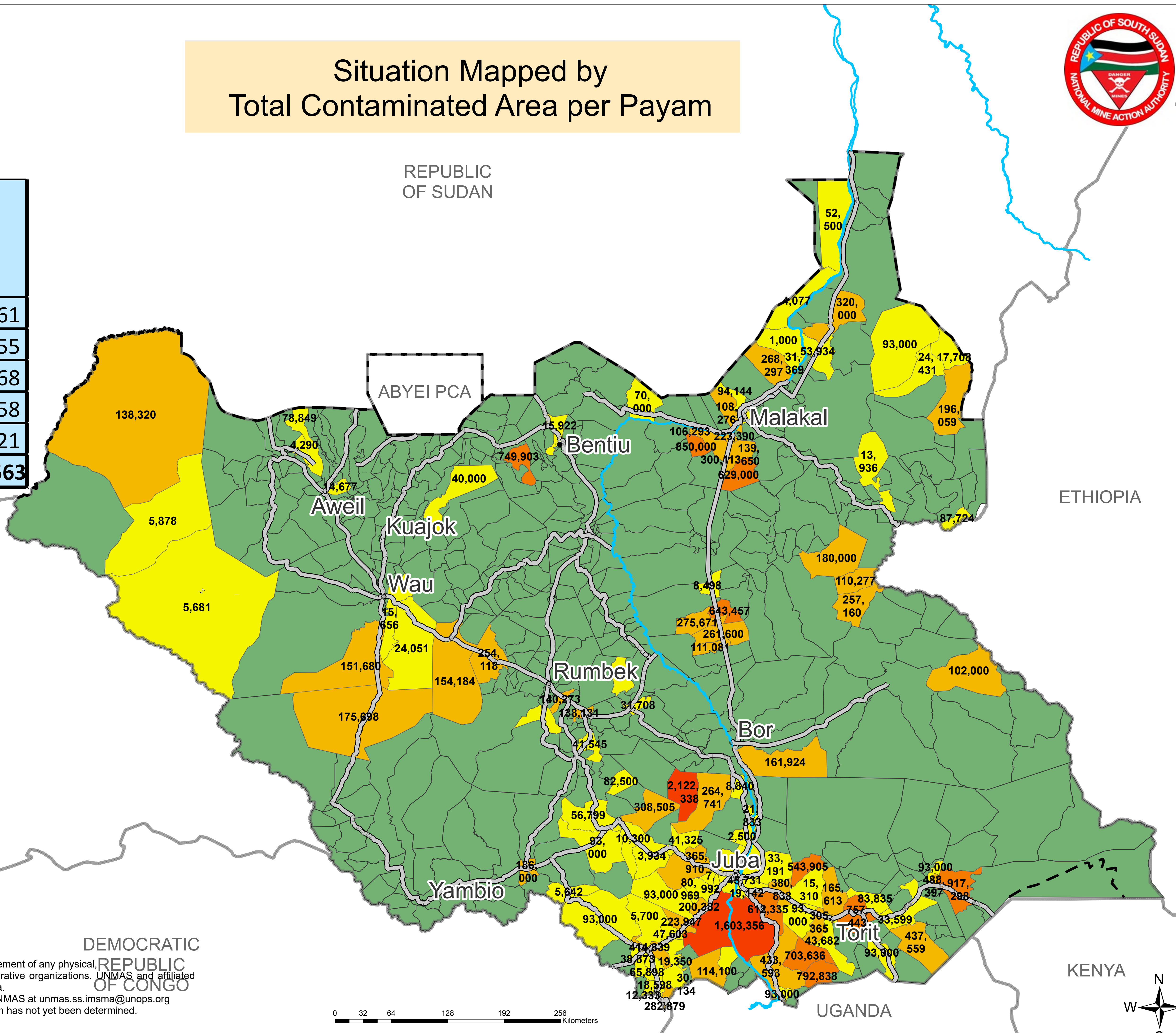
Situation Mapped by  
Total Contaminated Area per Payam

Open Hazard	# of Hazard	Area(Sqm)
AP Mines	114	4,943,561
AT Mines	51	2,329,655
Mined Road	26	3,919,768
Cluster Munitions	105	9,531,758
Battlefield	37	1,614,821
<b>Total</b>	<b>333</b>	<b>22,339,563</b>

**LEGEND**

- ★ Country Capital
- State Capital
- River Nile
- Major Roads
- - - Undetermined Boundary
- International Boundaries South Sudan

Total Contaminated Area	Payam	%
Above 3,000,000 Sqm	0	0.0
1,000,000 - 3,000,000	2	0.4
500,000 - 1,000,000	10	1.9
100,000 - 500,000	39	7.4
Up to 100,000 Sqm	61	11.6
No Known Hazards	413	78.7



The information shown on this map does not imply official recognition or endorsement of any physical, political boundaries or featured names by the United Nations or other collaborative organizations. UNMAS and affiliated organizations are not liable for damage of any kind related to the use of this data. Users who notice errors or omissions are encouraged to inform the IM unit of UNMAS at [unmas.ss.imsma@unops.org](mailto:unmas.ss.imsma@unops.org). Final boundary between the Republic of Sudan and the Republic of South Sudan has not yet been determined. Final status of the Abyei area is not yet determined.

